



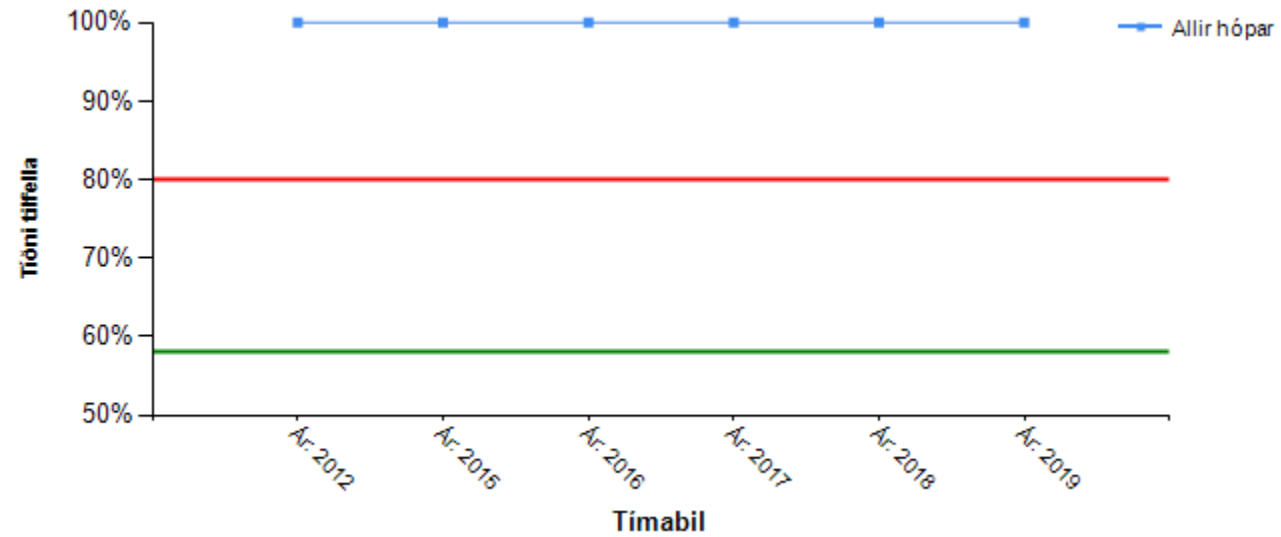
HEILBRIGÐISSTOFNUN  
SUÐURLANDS

# Gæðavísar RAI-HC HSU

2012-2019

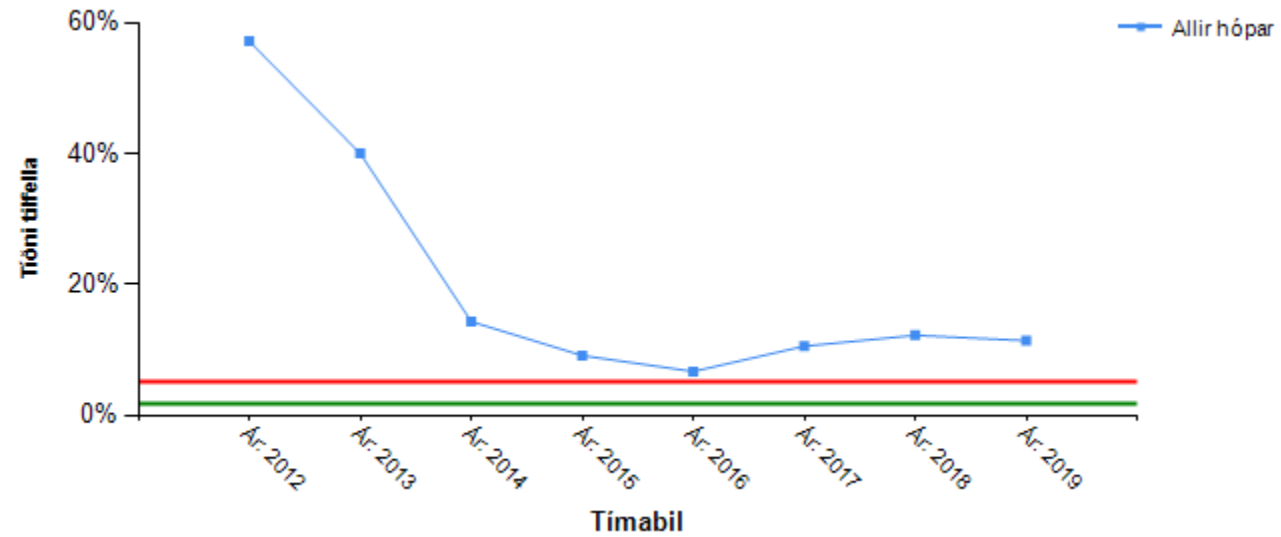


## ADL færni / endurhæfingar-möguleiki og engin meðferð



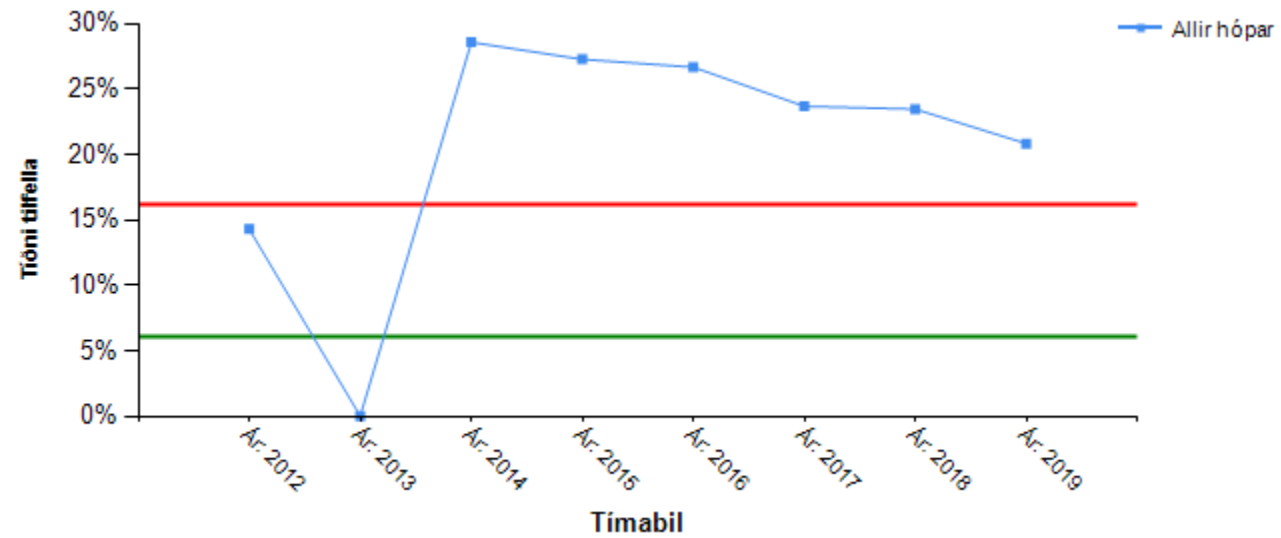


## Tíðni bráðarugls



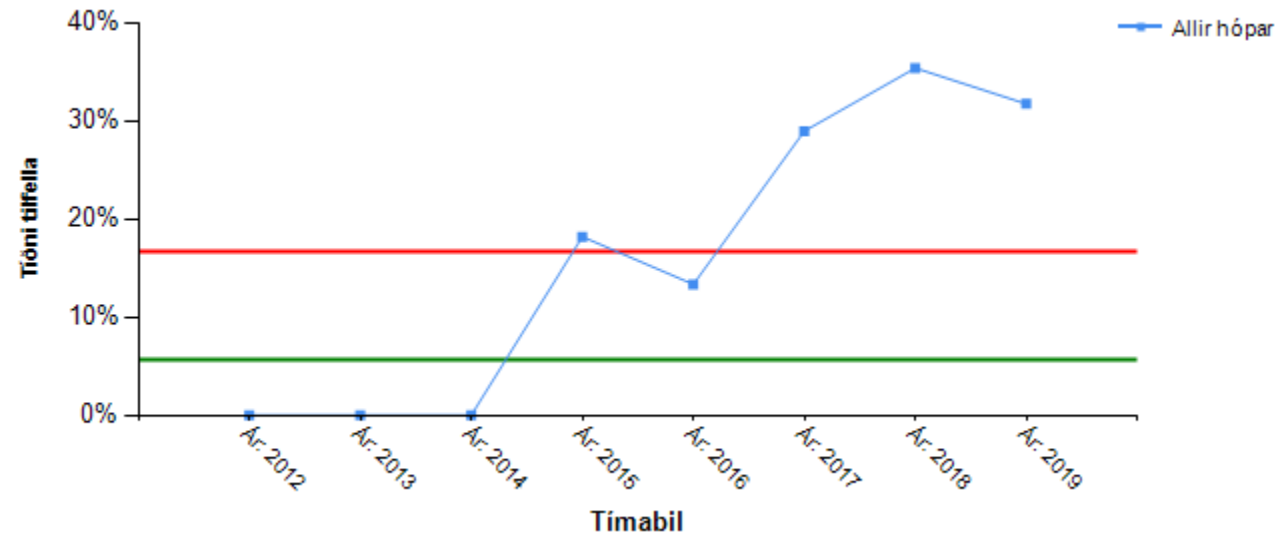


## Tíðni byltna



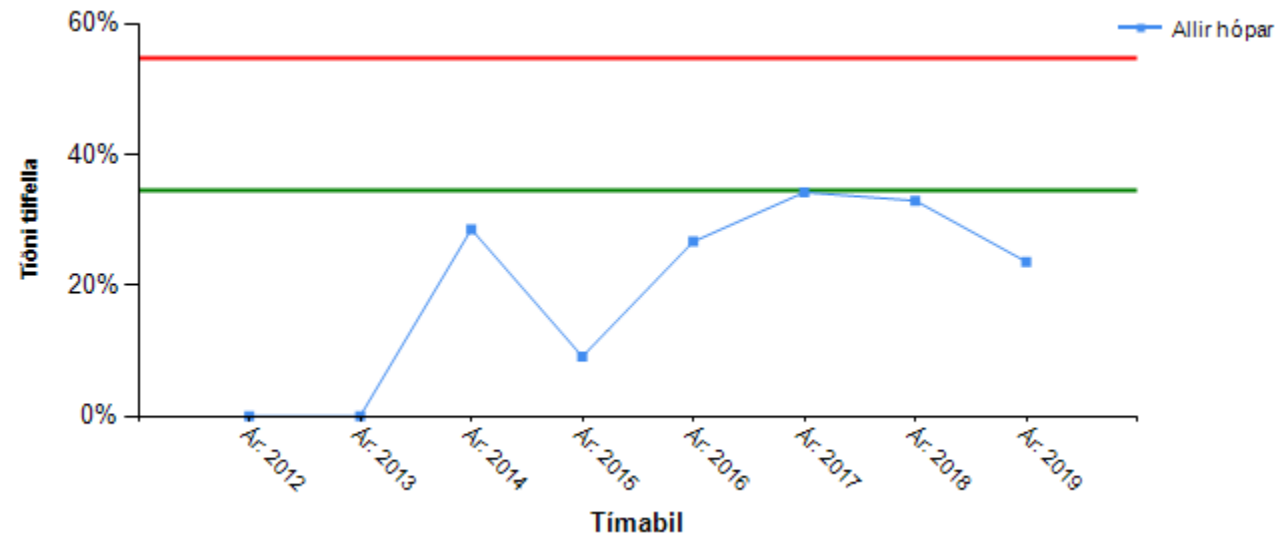


## Tíðni félagslegrar einangrunar



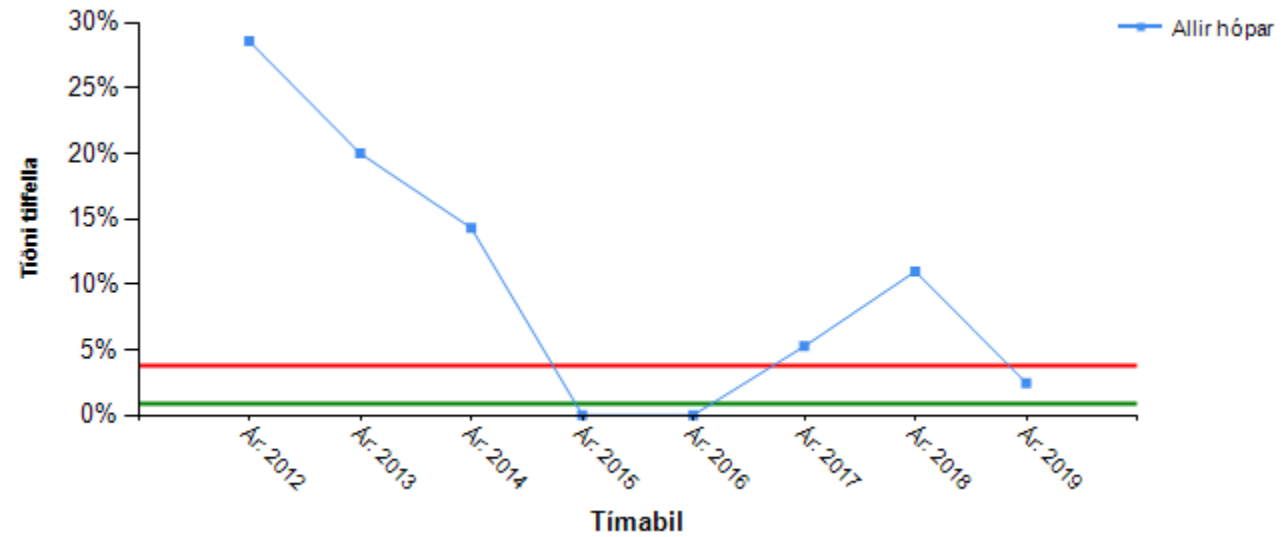


## Tíðni heimsókna á bráðamóttöku og sjúkrahússinnlagnir



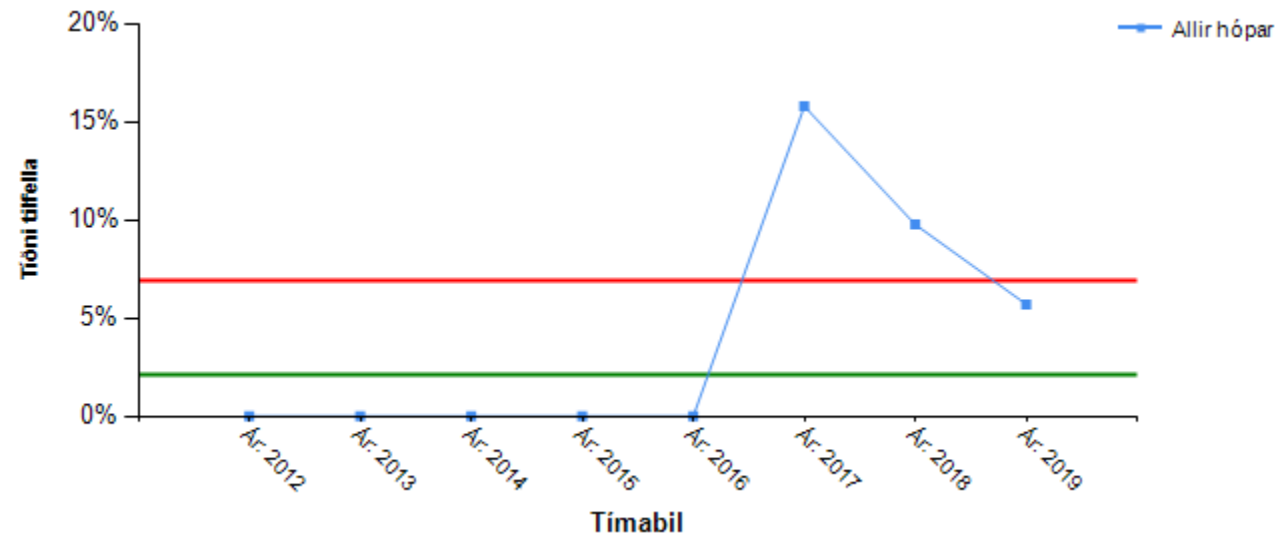


## Tíðni meiðsla / áverka





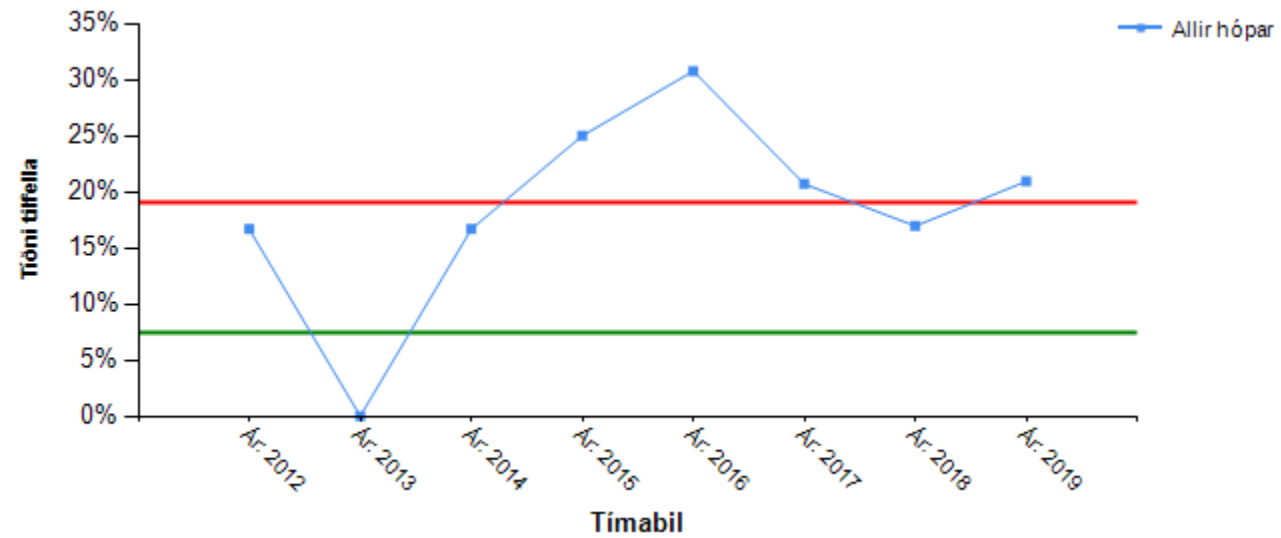
## Tíðni neikvæðni / depurðar





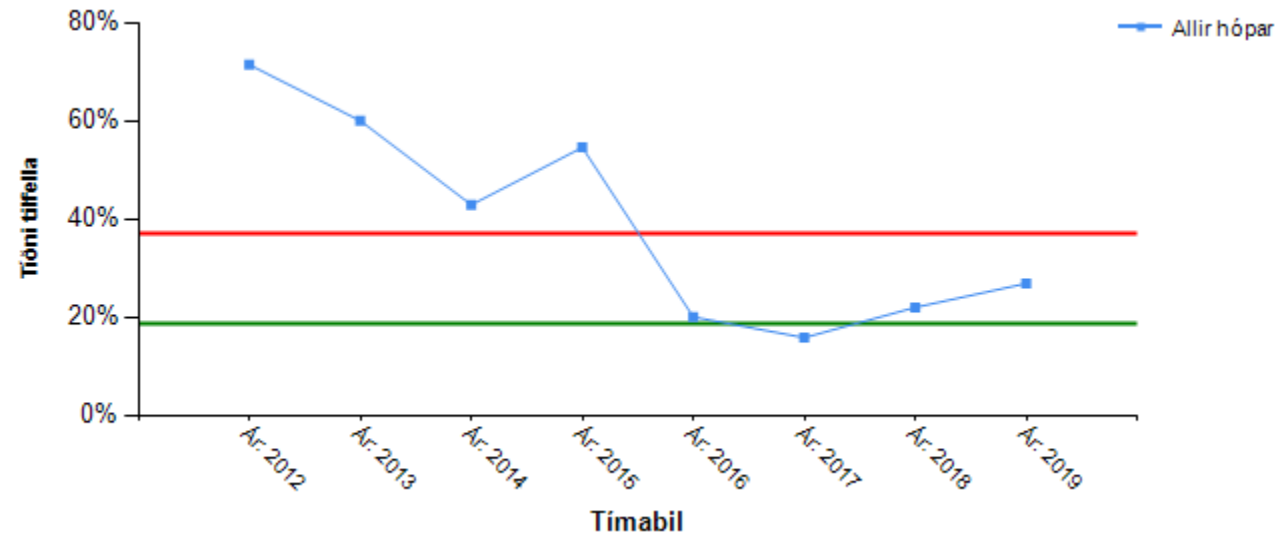


## Tíðni ófullnægjandi verkjastillingar



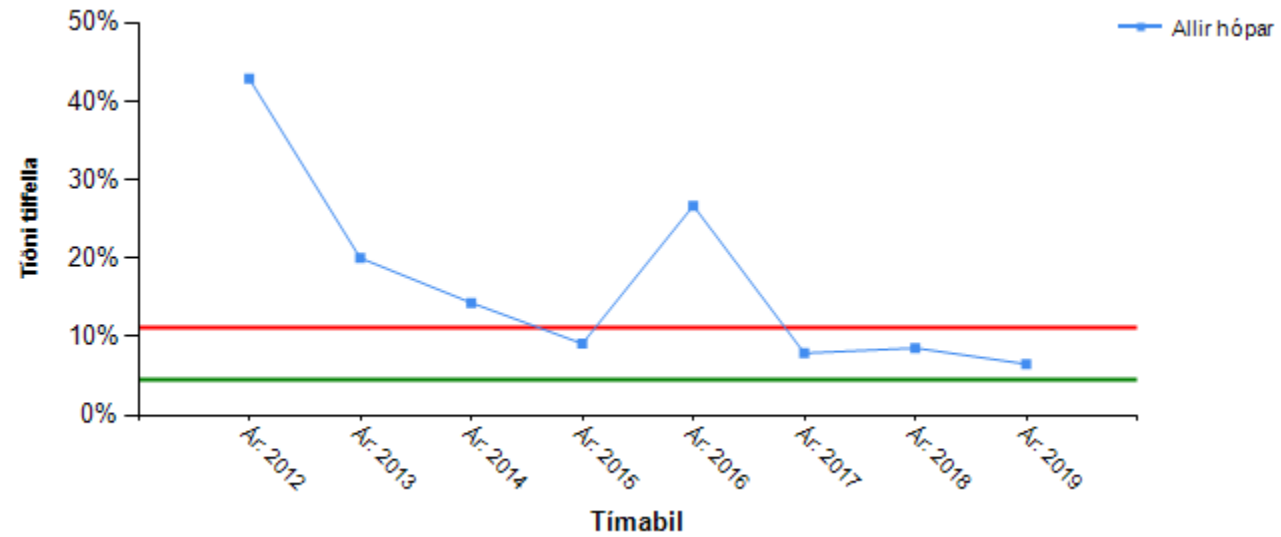


## Tíðni tilfella þar sem viðkomandi fékk ekki bólusetningu gegn inflúensu



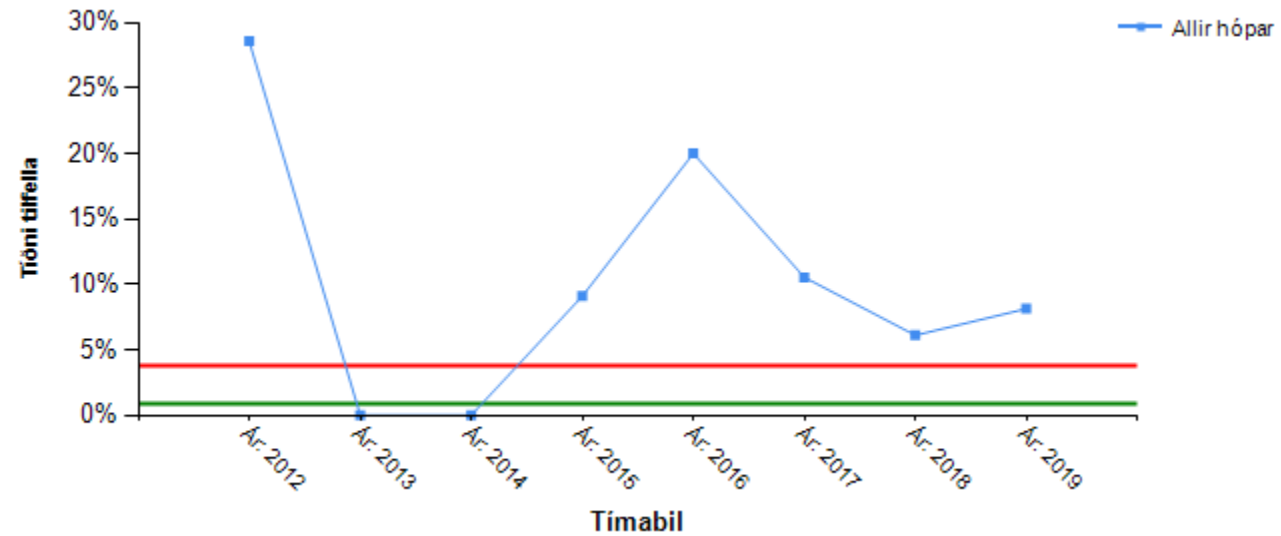


## Tíðni truflandi eða mikilla verkja



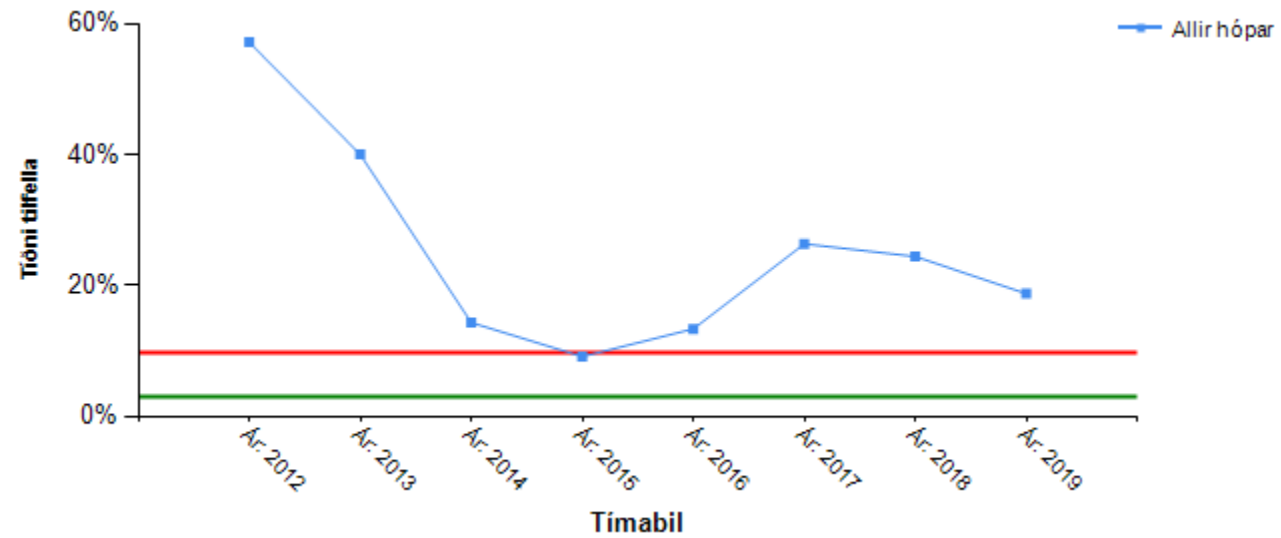


### Tíðni vanrækslu/ ofbeldi/misbeitingar





## Tíðni vökvaskorts





## Tíðni þyngdartaps

